



DERBYSHIRE'S
— *Estate Agents* —

Bowers Court, Clarkes Close, Chard, Somerset,
TA20 1ER

ACTING ON INSTRUCTIONS FROM THE RECEIVER.

A rare opportunity to purchase a largely completed development of 6 new build starter flats and 4 luxury conversion apartments.

Located in Chard, within easy walking distance to all amenities, with on-site parking.

All consents in place. For full information see planning application 16/00306/Ful on South Somerset website.

- LARGELY COMPLETED DEVELOPMENT
- A SELECTION OF 10 FLATS
- 4 LUXURY CONVERSIONS
- 6 NEW BUILD STARTER FLATS
- 1 COMPLETED SHOW FLAT
- PARKING
- GREAT LOCATION
- CLOSE TO AMENITIES

4 CONVERSIONS

2 bed spacious, character conversions of former church building . All divisions in place, fully plastered, 1st fix electrics etc complete, requires plumbing and bathrooms, kitchens and 2nd fix trades to complete. Show flat complete for marketing.

6 NEW BUILD

4 x 1 bed starter homes plus 2 x 1 bedroom penthouse flats. Exterior shell complete including roof, rainwater goods and fully glazed. Internal divisions in place, mostly

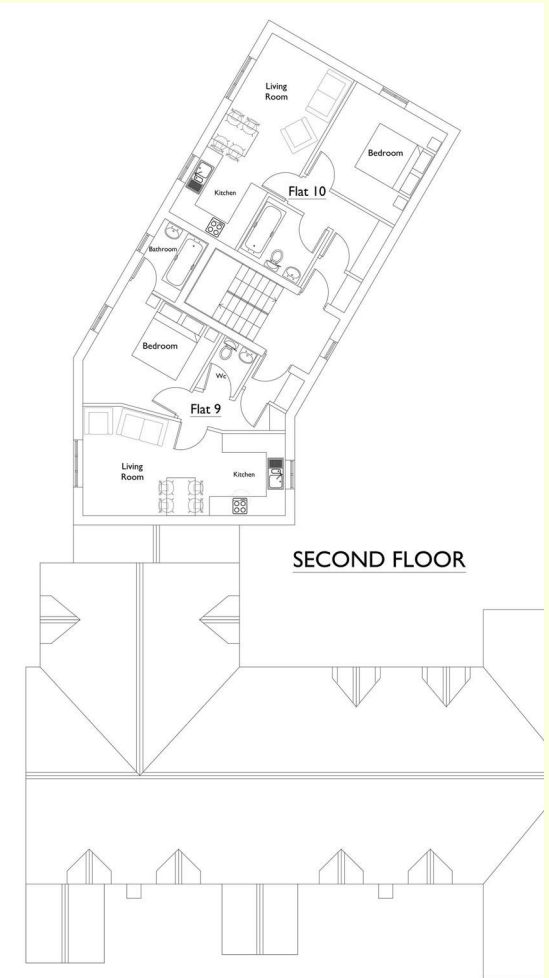
finishing trades required to complete. Flat 6 complete and ready to use as show flat to allow immediate marketing.

GDV

We believe the GDV to be in the region of £1.36m

Bowers Court, Clarkes Close, Chard, Somerset, TA20 1ER

Guide Price £750,000





DERBYSHIRE'S
Estate Agents

7, High Street, Chard, Somerset, TA20 1QF
www.derbyshires.net 01460 63600